



DARTMOOR VIEW  
HOLIDAY PARK

# Time after time.

SUITCASE OF MEMORIES

0808 143 6191 | [dartmoor-view.enquiries@haulfryn.co.uk](mailto:dartmoor-view.enquiries@haulfryn.co.uk) | [haulfrynholidays.co.uk](http://haulfrynholidays.co.uk)



SMILE, LAUGH AND MAKE MEMORIES

# Welcome to Haulfryn.

GET TO KNOW US



We are a family-owned business with lots of experience in finding holiday homes for owners, having been offering fabulous holidays and holiday homes for more than 85 years. With many desirable locations dotted around England and Wales from captivating Cornwall, Devon and Wiltshire to gorgeous Cheshire, North Wales and Surrey, we provide the best backdrop to the lovely scenery and iconic landmarks that you will find in abundance around our resorts and parks.

From one bedroom caravans to two, three and four bedroom luxury lodges and next level holiday homes, at Haulfryn we are here to make sure you find the right holiday home for all your enjoyable holiday moments, filled with smiles, laughter and memories. Somewhere you can retreat to put your feet up and completely relax in total comfort after days of exploration. A holiday home for you to return to time and time again.

# Set within nature.

## DARTMOOR VIEW HOLIDAY PARK

Settled close to Dartmoor National Park, with 20 acres of landscaped mature grounds to explore, Dartmoor View Holiday Park, is one of a kind. Let any little stresses slip away as soon as you arrive as a feeling of peacefulness embraces you. Enjoy a holiday home hugged by rolling hills and greenery, surround yourself with gorgeous views while sitting on your sun deck and fall asleep listen to the sounds of nature.

Own a holiday home here and you'll enjoy fun-filled, laidback holidays whenever you want. Spend your summer with us, come for lots of weekends away or have as many seasonal mini breaks as you desire (or as much time off as everyday life allows). Keep your holiday home just for you, invite your extended family or let your close-knit group of friends join you. If you want to earn a few pennies while you are not using it, ask us about our managed sublet service and we'll let your holiday home for you while you're not here. And as we're surrounded by countryside and nature trails we're ideally placed for your pooches to love it as much as you do.

FALL ASLEEP  
TO THE  
SOUNDS  
OF NATURE

### IN THE SPOTLIGHT



We're pet friendly



Stay whenever you want, we're open all year



Managed sublet service available



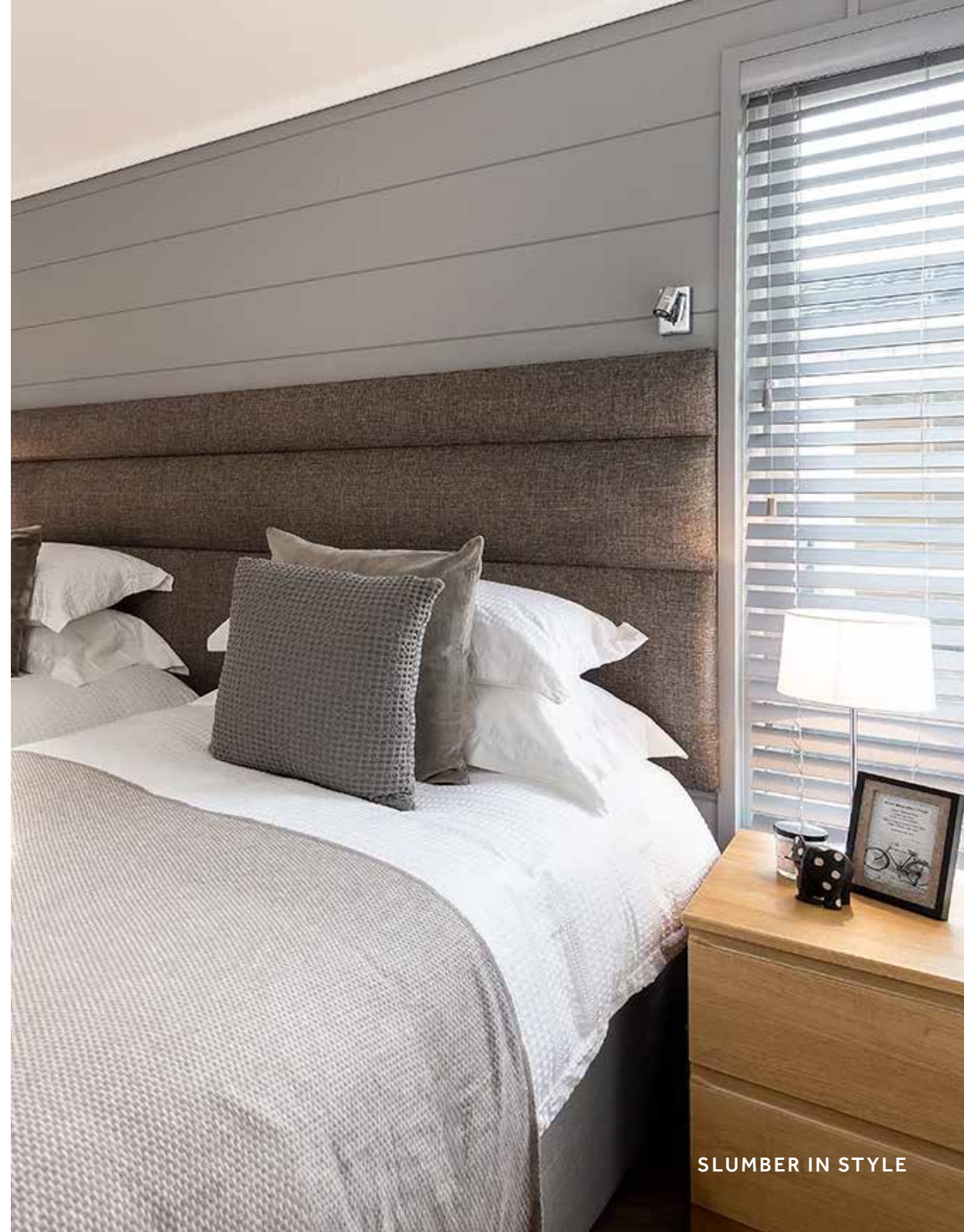
Outdoor heated swimming pool and children's play area add a touch of fun

# Your holiday home.

## FIND THE BEST SPOT FOR YOU

Come and take a tour of our park to find the best spot to suit you. We have a range of new and preloved two and three bedroom luxury holiday homes available. From comfy holiday homes where you'll immediately feel relaxed to sought-after lodges with stunning views.

We have many popular models on offer, offering expansive open-plan living spaces for you to unwind with family or friends. Indulge in the stylish, on-trend interiors and well-equipped modern kitchens, perfect for whipping up delightful culinary creations. Enjoy your leisure time by relaxing in comfort, soaking in the natural surroundings from your private decking, and easing into a restful sleep at the close of each day.



SLUMBER IN STYLE



ALL THE  
BUBBLES

### Fancy a soak?

Pick a holiday home with an ensuite shower room or a cosy bathroom for those moments when you want to take some time and indulge in a bubbly bath, letting any little stresses slip away before bedtime.

### All the bubbles

Imagine late night dips in the warm bubbles of a hot tub, gazing at a starry night sky or stepping in at sunrise to start your day. Talk to us about purchasing a lodge with a hot tub.

### What's included?

- ~ Fully furnished
- ~ Fully double glazed
- ~ Gas central heating
- ~ Allocated parking
- ~ Individual Wi-Fi connection and service to your holiday home
- ~ Sun decking
- ~ Manufacturers guarantee
- ~ External natural timber cladding

### You'll want to know:

Our holiday homes are constructed to ensure ultra low maintenance and durability without compromising longevity or aesthetics. You'll find residential uPVC energy efficient windows, gas central heating and internal stud walls providing superb sound and heat insulation.



## We care about sustainability

We already have processes in place to reduce our environmental footprint at Dartmoor View Holiday Park by using less energy, water and other resources, producing less waste and buying products and services that are less destructive. We're on a journey and have already created many opportunities for reducing your holiday home utility bills but we aim to keep improving.



# All yours.

## FOR YOU TO EXPERIENCE

From sunny days lounging around the outdoor pool with a book to challenging loved ones to a game of swing ball, owning a holiday home at Dartmoor View Holiday Park, you'll have access to all this:

- ~ Owner's lounge
- ~ Outdoor pool
- ~ Children's play area
- ~ Table tennis
- ~ Swing ball
- ~ Badminton



# All about your holiday moments...

Buying a holiday home is all about enjoying lots of holiday moments, with you and your people, in the luxury of your own accommodation, whenever you like.

**But there are other benefits too:**

- ✔ Safe and secure – lock up and leave, knowing we're here to keep an eye on things
- ✔ No stamp duty to pay
- ✔ No conveyancing or legal fees to pay
- ✔ Access to great facilities, so you can do as little or as much as you like whenever you stay
- ✔ Earn a few pennies towards your running costs with access to our managed sublet service
- ✔ Affordable site fees
- ✔ Holiday homes with a little bit of wow
- ✔ Owner events



# All in the location.

**IN THE WILD**

Walking boots at the ready. Dartmoor View Holiday Park is surrounded by enchanting nature trails and national parks. Explore Canonteign Falls, where you can climb to view the South West's tallest waterfall, or marvel at the National Collection of ferns within Canonteign's Fern garden. Wander through the captivating Lydford Gorge, where ancient woodlands teem with diverse wildlife. Immerse yourself in Wistman's Wood in the Dart River valley, which boasts a rare and delicate habitat of upland heathland, and glimpses of a myriad of moorland birds. And, of course, don't miss the dramatic landscapes of Dartmoor National Park, offering ample opportunities for memorable outings.





## Towns and history.

Like to surround yourself with a little bit of history? There are a host of heritage sites nearby from Okehampton Castle, St Mary's Church and Meldon Viaduct. Prefer to mooch about in new places and try foodie destinations, take your time to get to know Okehampton, Tavistock, Newton Abbott and Teignmouth.



TAKE A WANDER



## Beach life.

A blustery walk along the beach wrapped up warm is just as refreshing for the soul as a sunny day paddling in the sea and wiggling sandy toes. Just as well there is a great stretch of coastline for you to explore. Dawlish Warren Beach is a sandy one and a half mile beach, with sheltered sand dunes. Or Teignmouth beach, which offers two beaches on the mouth of the estuary and is popular with watersports enthusiasts. Both about 30 minutes away.

# Be a holiday home host.

## **EARN A FEW PENNIES ALONG THE WAY**

Let us sublet your holiday home while you're not staying with us and earn a few pennies along the way. This is great for offsetting some of the running costs of your holiday home while letting others enjoy it as much as you do. And it saves your holiday home sitting there empty while you're unable to get away for a visit.

Ask us about joining our managed sublet service, where we take care of everything for you. From marketing to bookings, cleaning to maintenance, it's a hassle-free way to earn a little bit of pocket change. You'll be at home, knowing your holiday home is being safely looked after by us.



A row of modern holiday homes with wooden fences in a green park setting. The homes are light-colored with dark roofs and large windows. They are surrounded by lush green grass and tall trees in the background. A wooden fence runs across the foreground, separating the viewer from the homes. The sky is blue with some clouds.

Come say hi.

**TALK ALL THINGS OWNERSHIP**

Get in touch with your friendly team to book your personalised tour of the park. Get to know us and the local area, and talk to us about all things ownership before choosing the holiday home lifestyle.



# Get in touch.

BOOK YOUR PERSONAL TOUR

[Haulfrynholidays.co.uk](https://haulfrynholidays.co.uk)

To arrange your tour or for further information,  
please call **0808 143 6191** or email  
[dartmoor-view.enquiries@haulfryn.co.uk](mailto:dartmoor-view.enquiries@haulfryn.co.uk)

Dartmoor View Holiday Park 

Holmans Wood Holiday Park 

Finlake Resort & Spa 

Devon Hills Holiday Park 

Praa Sands Holiday Park 



Five locations to choose from